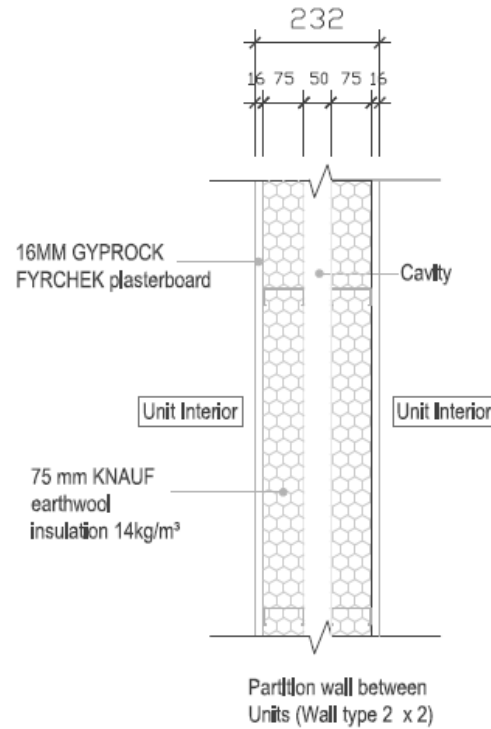


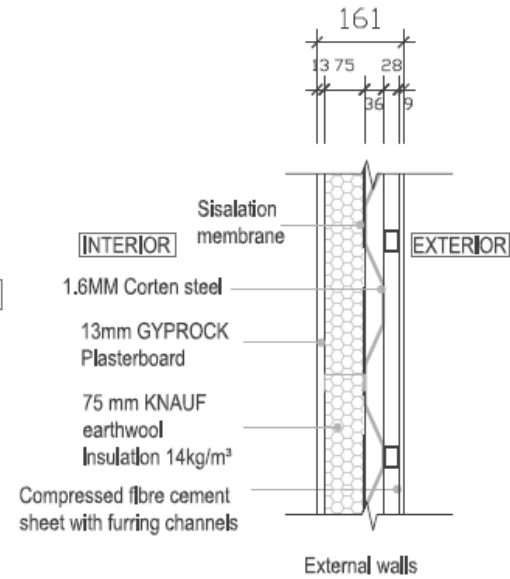
### WALL TYPE 1

Reference: Gyprock CSR 218  
 FRL : 60/60/60  
 Acoustic rating :  $R_w + C_{tr} \geq 50 + \text{Discontinuous}$



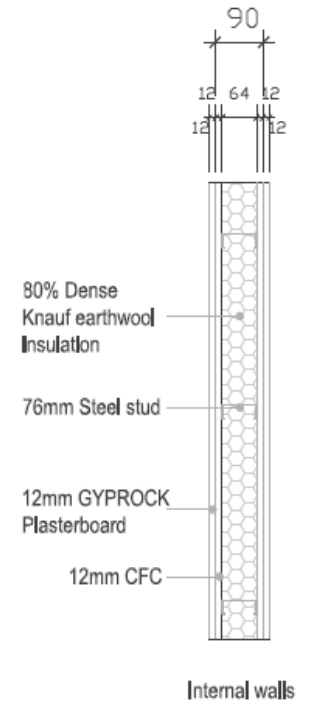
### WALL TYPE 2

Reference: Gyprock CSR 218  
 FRL : 60/60/60  
 Acoustic rating :  $R_w + C_{tr} \geq 50 + \text{Discontinuous}$



### WALL TYPE 3

Insulation :  $R > 1.9$



### WALL TYPE 4

